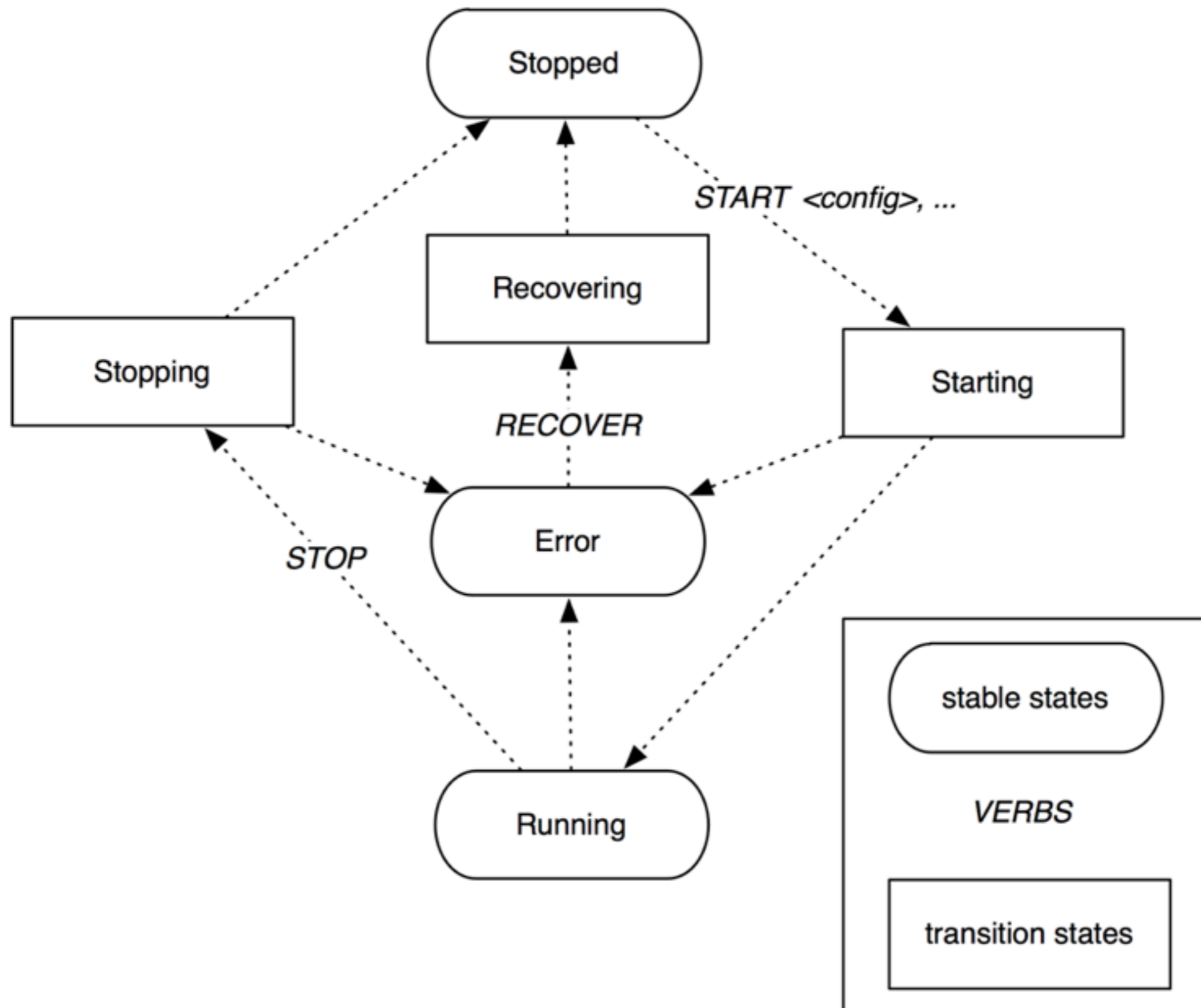


IceCube single DAQ component



IceCube multiple DAQ components

- Same, except:
 - *Components states are changed together* (e.g. all go from STOPPED->STARTING)
 - Components are otherwise independent, except:
 - Any component in error state causes all components to be stopped (and, generally, restarted).

Current “lbnerc” RC prototype*

- XML-RPC for state management
- Multiple DAQ component model close to implemented
- Other models should be straightforward to implement (e.g., different state diagrams or interdependent state transitions)

* <https://github.com/eigenhombre/lbnerc> - private repository; send GitHub username to john@mail.npxdesigns.com